

An overview of the trends shaping Irvine today.



IRVINE

SNAPSHOTS



IRVINE'S CONTINGENCY RESERVE FUND



The City has approximately \$20.8 million or 15% of General Fund operating appropriations in reserves.

Source: City of Irvine — Budget Office

NEW IRVINE BUSINESS LICENSE APPLICATIONS



Since 2010, the City has received a steady increase in the number of new business license applications and is proud of the more than 21,000 businesses operating in Irvine.

Source: City of Irvine — Public Safety Department

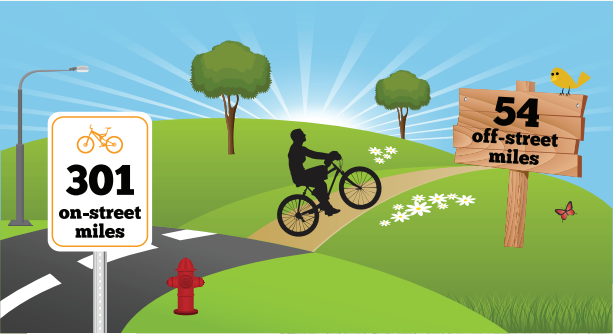
HOLIDAY TOY DRIVES



In partnership with the Irvine 2/11 Marine Adoption Committee and the Irvine Police Association, the City held toy drives that generated 1,720 toys benefiting children and families of Human Options, and Irvine's adopted Marine Battalion from Camp Pendleton.

Source: City of Irvine — Community Services Department, Public Safety Department

BICYCLE FRIENDLY COMMUNITY



Irvine provides a network of 301 on-street miles and 54 miles of off-street bikeways. In 2009, the League of American Bicyclists recognized Irvine as a Bicycle Friendly Community, the first within Orange County and one of just 22 California cities to receive this recognition.

Source: City of Irvine — Public Works Department

IRVINE VOTER REGISTRATION



The City's voter outreach registration efforts led to Irvine's highest turn out in the City's history, with 121,533 registered voters among 223,000 residents.

Source: City of Irvine — City Clerk's Office Municipal Election History

IRVINE RANKED NO. 6 AMONG TOP CITIES WITH THE HAPPIEST YOUNG PROFESSIONALS

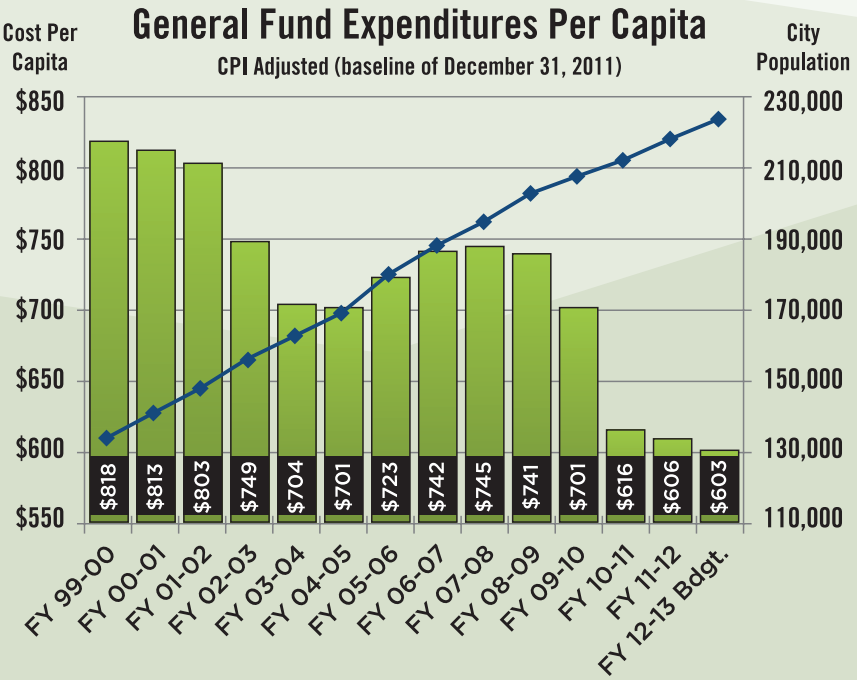


Forbes magazine ranked Irvine No. 6 among U.S. cities with the Happiest Young Professionals based on criteria including work-life balance, work environment, job resources, compensation and growth opportunities.

Source: Forbes.com

PRODUCTIVITY GOLD STANDARD

The Gold Standard is an illustration of the City’s firm commitment to fiscal responsibility and reflects expenditures on a per capita basis. There has been a 24% decline in per capita operating costs in the last 12 years.



Source: City of Irvine — Fiscal Year 2012-13 Budget

CONTACT INFORMATION

Email: snapshots@cityofirvine.org Visit: cityofirvine.org/snapshots Call: 949.724.6000

The City of Irvine has a population over 223,000, spans 66 square miles and is recognized as one of America’s safest and most successful master-planned urban communities. Top-rated educational institutions, an enterprising business atmosphere, sound environmental stewardship, and respect for diversity all contribute to Irvine’s enviable quality of life. This family-friendly city features 16,000 acres of parks, sports fields and dedicated open space.