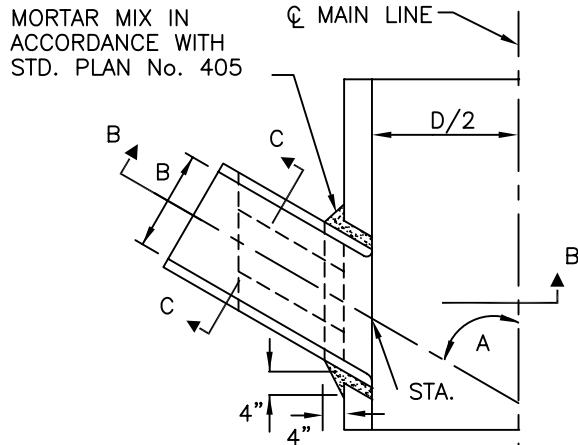
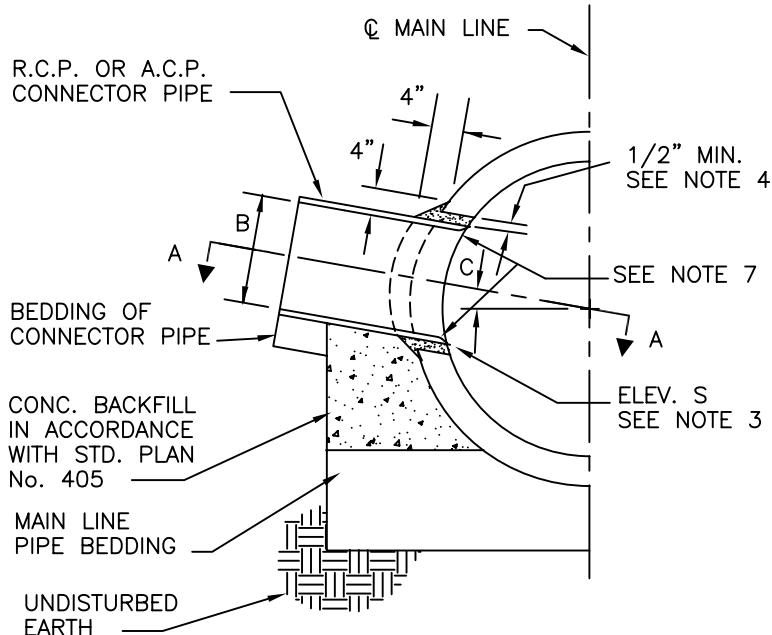
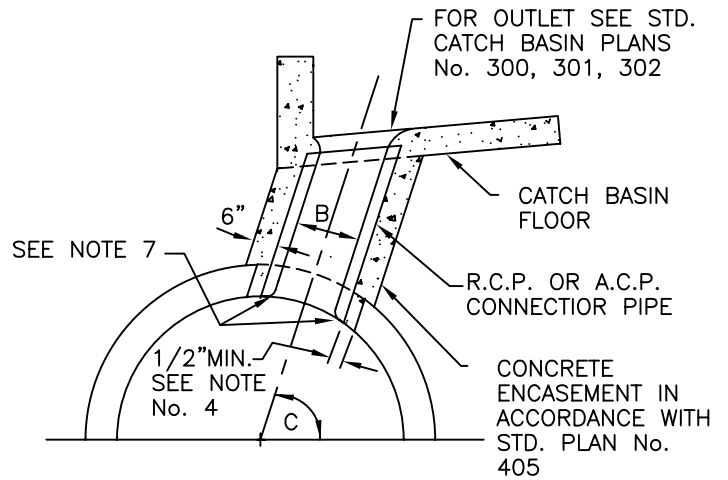


CASE I



SECTION A-A

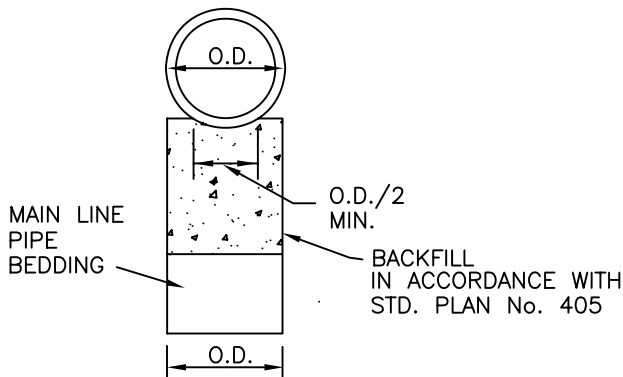
CASE II




SECTION B-B

NOTES:

1. ANGLE A SHALL BE BETWEEN 45° & 90° AND B SHALL BE 24" OR LESS.
2. IN NO CASE SHALL THE O.D. OF INLET PIPE EXCEED 1/2 THE I.D. OF THE MAIN LINE.
3. CENTER LINE OF INLET SHALL BE ON RADIUS OF MAIN LINE EXCEPT WHERE ELEV. S IS SHOWN ON PROJECT DRAWINGS.
4. THE OPENING INTO THE MAIN LINE SHALL BE THE O.D. OF INLET PIPE PLUS 1 INCH MINIMUM TO 3 INCHES MAXIMUM.
5. IF ANGLE C IS 45° OR LESS, USE CASE I. IF ANGLE C IS GREATER THAN 45, USE CASE II.
6. ALL CONNECTOR PIPES WITHIN THE ANGLES SPECIFIED FOR CASE II, SHALL BE ENCASED WITH CONCRETE MIX IN ACCORDANCE WITH STD. PLAN No. 405.
7. BURN OR CHIP END OF CONNECTOR PIPE FLUSH WITH THE INNER SURFACE OF MAIN LINE PIPE. ROUND EDGE OF R.C.P.
8. STATION SPECIFIED ON PLANS APPLIES AT THE INTERSECTION OF THE INSIDE WALL OF MAIN LINE PIPE AND THE CENTER LINE OF CONNECTOR PIPE.
9. MANHOLE MUST BE LOCATED WITHIN 50 FEET, TO USE THIS TYPE OF JUNCTION.



SECTION C-C

REVISIONS	CITY OF IRVINE	STANDARD PLAN No.
	JUNCTION STRUCTURE No. V	309B
	 Approved by: Mark L. Carroll R.C.E. 31515 City Engineer	Sheet 1 of 1
	Date: 03-19-2009	